

Feb. 3, 1978



Cajon Division

Pacific Coast Region
National Model Railroad Association

ORDER BOARD

VOLUME 6 ISSUE 4

JANUARY 1978



ABOUT THIS ISSUE
comments and random notes
by Craig Walker, Editor

This issue is late. But then again, you already know that. What you may not know is why. Briefly, there has been a re-organization of many of the PCR officers. This resulted in some confusion on just about everybody's part, especially me. This resulted in a lack of mailing labels, so, while much of this issue was ready to go to press months ago, I held off taking it to the printer in case of last minute changes. For example, the date for the Cajon Division Banquet was moved back a month, to March 11. Now that we have found who has the labels, I don't foresee any more delays on future issues.

Advertising defrays much of the cost of printing the "Order Board," saving as much money as possible for putting on Division meets and other worthwhile events. Most of our advertisers are paid up only through this issue, and I sincerely hope that they will continue to support us. I also hope that the Cajon Division members in turn support our advertisers! If your favorite hobby shop doesn't advertise in the "Order Board," ask them why they don't; it helps out all of us.

I'm still looking for people willing to see their names in print and write articles or columns for us. If you're in either N scale or 1/4 inch scale and feel that your scale is not properly being represented in the "Order Board," then do something about it -- write a column!

COVER

Los Angeles in the good ol' days is represented by Santa Fe 4-8-4 2926 on the turntable at Redondo roundhouse. The photo is by the late Walt Masters, a one-time Cajon Division member.

JUST A DRUMBEAT AWAY.....

ROBERT L. BARBERA
Representing
HERITAGE
HOBBY SHOPPE

Mon-Th 10-6
Friday 10-9 Sun 11-5
Sat 9-6
Sun 11-5

ROSSMOOR SHOPPING CENTER
12433 SEAL BEACH BOULEVARD
SEAL BEACH CALIFORNIA 90740 213/598-5400

- * MILITARY MINIFIGURES
- * AIRCRAFT MODELS
- * SOCIETY RIFLS
- * JAPANESE LORE
- * MOTOR CAR MODELS
- * TRAINS AND TRUCKS
- * SCOUTING CRAFTS
- * SHIPS AND SAR
- * HERITAGE BOOKS
- * HISTORICAL PRINTS
- * ARMOR AND TANKS
- * CRAFTS AND PROJECTS
- * HOBBY TOOLS
- * HOBBYWARE
- * DECALS
- * PRINTS

The area represented by the Cajon Division is probably one of the country's greatest concentrations of fine model railroaders, so let's hear from you!

Enjoy the issue, and as always,
I solicit your comments.

1978 CALENDAR OF EVENTS events of interest to Cajon Division members

- | | |
|-------------------|---|
| MAR 11 | Cajon Division Banquet
& annual business meeting -- Buena Park Convention Center Hotel -- favorite model contest |
| APR 28-
-30 | Saguaro '78 PCR Convention -- Phoenix, Arizona |
| MAY 14 | Cajon Division Picnic -- Riverside Live Steamers |
| JUL 31-
-AUG 6 | Wolverine Express '78
NMRA National Convention
Dearborn, Michigan |
| AUGUST | Cajon Division Auction
Contest - all categories |
| NOVEMBER | Cajon Division Model
Railroad Show |

THE FIREMAN'S SEAT
by Jim Groover, Superintendent

I recently received a letter from LeRoy Thompson, Chairman of the PCR Member Aid Committee. He has asked that, as Superintendent, I be the committee member from the Cajon Division. I am glad to accept the position and therefore would like all Division members to know something about this new service so it can be used.

The purpose of the program is simply to supply specific answers to questions about the many phases of model railroad-ing. In other words...the buck stops here. If I don't readily know an answer, I will find out who has it and put the two together.

Will Rogers once said, "We are all ignorant, about something." If any members of the Division run across someone requesting help, whether he is a member or not, try to satisfy him. If you are unable to provide the answer, call me. Don't let a model railroader, or a potential model railroader wander off to another hobby for lack of a helping-hand.

I have been informed by the PCR that our By-Laws that were submitted for approval were not acceptable. We are in the process of writing a new set, using the PCR By-Laws and Manual of Operations as a guide so that we will have the necessary conformity. These new By-Laws will be submitted as soon as possible. We will have an adequate and workable set in the near future so that a new Manual of Operations can be prepared and we can return to steaming.


I'm glad I got to meet as many of you as I did at the PCR Mini in San Bernardino. I sincerely hope each and every one of you will be able to attend the Cajon Division's annual banquet and business meeting. It will

be held at the Buena Park Convention Center on March 11, so mark that date on your calendar and bring your friends! See you there . . .

Jim

* * BRASS * * * * * WESTSIDE & PFM *
* BUY & SELL LIONEL *

TRAINS



Bob Longstreet
(714) 893-4911

N-HO-0

**DICK'S
HOBBY
SHOP**

13079 Springdale Street
Westminster, CA 92683

CLOSED WEDNESDAYS

WIDE GAUGE WORLD
a view on contemporary modeling
by Ron Hawkins

POOL POWER . . . the term excites every railfan. But what about you, the modeler? What effect does pool power have on you?

Let's begin by taking a look at some pools currently going on. The largest southwest road with pooling and run-through agreement is the Southern Pacific. Some of the foreign power working into the Division includes Conrail (GP38's and 40's; SD35's, 40's, and 45's; and U25, 28, 30, 33 and 36B's), Norfolk and Western (GP9's and 18's; U30B's; SD40's and RS11's), Southern (SD40's), Union Pacific (SD40's and U30C's), Burlington Northern (SD40's and Radio Control cars) and one road that is often over-

(cont on pg 4)

HOBBY WAREHOUSE

HOBBY & CRAFT HEADQUARTERS
Factory Authorized Repair Service
SPECIALIZING IN HOBBY REPAIRS
AND CONSTRUCTION OF DISPLAYS & SCENARIOS
531-3413



WIDE GAUGE WORLD (cont)

looked -- the Cotton Belt (GP9's, 20's, 30's, and 35's; SD45's and SD45T-2's). Also, don't forget that the Santa Fe has running rights on the Southern Pacific over the Tehachapi Mountains.

Off-road power found on the Union Pacific are Burlington Northern (GP40's; SD40's and 45's; F45's; U30C's and U33C's), Western Pacific (GP35's and 40's, and U30B's) Norfolk and Western (GP38's and SD40's), Chicago and Northwestern (SD40's), Frisco (SD45's), Illinois Central Gulf (GP40's) and the Rio Grande SD45's seen almost daily on the Kaiser (Fontana) unit coal train.

Finally, we come to the Santa Fe. On the Eastern portion of their lines they are currently leasing units from both C&NW and Canadian National. Because these locos are not equipped with dynamic brakes, they do not normally work west of Belen, New Mexico. At least two CN locos, however, have worked into Barstow, with one, SD40 5071, working into Los Angeles on October 13.

Specializing in Brass Imports • Custom Painting
Scratch Builders Supplies



THE BACK SHOP
Exclusively Model Railroaders

DENNIS WEAVER

14341 Beach Blvd., Suite F
Westminster, California 92683
(714) 893-2552

HO*****HO_{n3}*****O*****On3

LARGE SELECTION BRASS IMPORTS AND
SCRATCH BUILDERS SUPPLIES

CUSTOM PAINTING & REPAIRS

HOURS

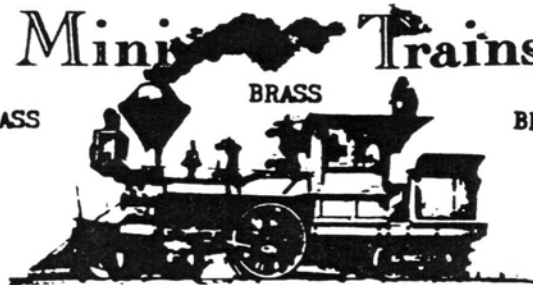
WEEKDAYS 5-8PM***SAT.10-6PM***SUN.12-4PM
CLOSED WEDNESDAY

Mini Trains

BRASS

BRASS

BRASS



NARROW GAUGE SPECIALISTS

WE STOCK & REPAIR ALL GAUGES

O - S - HO - N LIONEL & FLYER

OPERATING
HO-HO_{n3}
&
TRACTION
LAYOUT

TRY OUR
NEW
R/C
DEPARTMENT

ASK ABOUT OUR
MONEY SAVING
BONUS PLAN

Mon.-Fri. 10-9.

(714) 549-1596

Sat. 10-6.

1113 Baker Street
Costa Mesa, Ca. 92626

Sun. 10-5

Ken Lamb

Visitors can show up for a variety of reasons. How about that Santa Fe eastbound in Fullerton with a Los Angeles Junction S4 in the consist, being ferried to a buyer in the East? Or how about those three CN wide-nosed SD40's testing on the Espee a year ago? And what about the Precision Leasing switchers working the Amtrak roundhouse in LA? Would you believe two New York City subway cars arriving in Los Angeles on the Santa Fe (our editor has slides to prove it)? It just goes to prove that there is a prototype for everything, including fictional roadnames. It seems that a Santa Fe boxcar that had been lettered for a phony road for the filming of a television show was seen in revenue service in Pomona one night. Now what did I do with that PCR convention boxcar . . . ?

The idea of pooling locomotives is not new. It occurred occasionally during the days of steam. But with the convenience of running Diesels in multiple-unit

(cont on pg 5)

WIDE GAUGE WORLD (cont)

lashups, pooling came of age.

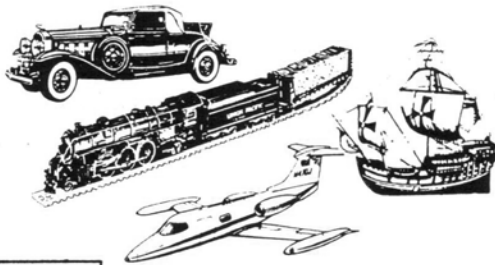
Next time, we'll take a look at freight cars of the fifties. Until then . . .

Ron

(Editor's note: In typing this article, I overlooked a footnote by ron adding L&N, SCL and Chessie System -- C&O/B&O -- to the list of roads pooling with SP. Also, if I may, some additions of my own: For years the Rock Island

ran locos in this area on the Espee, and not just hood units. The Sunset Limited often had a Rock Island E7 on the head-end. Seaboard Coast Lines BiCentennial U36B 1776, along with Frisco's red, white and blue caboose with the same number, worked a display train on the Santa Fe back in 1972. And finally, how about the ex-Canadian Pacific Royal Hudson that ran on both Santa Fe and SP last spring?)

COME SEE US AT OUR TWO FREEWAY CLOSE LOCATIONS FOR ALL YOUR MODEL RAILROAD NEEDS



COMPLETE
ACCESSORIES
AND TOOLS



MON thru SAT 9 A.M. TO 6 P.M.

MON. & FRI. NITES 'TIL 9 P.M.



HARPER'S HOBBY SHOP

RIVERSIDE

SINCE 1967

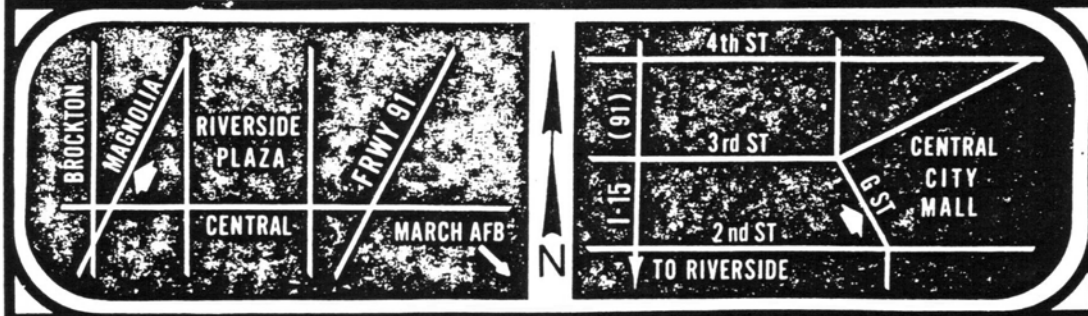
SAN BERNARDINO

683-5865

889-5917

6568 MAGNOLIA AVE.
Near RIVERSIDE PLAZA

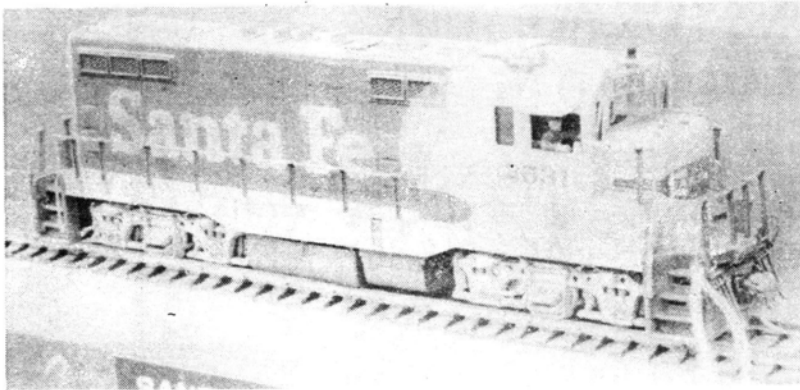
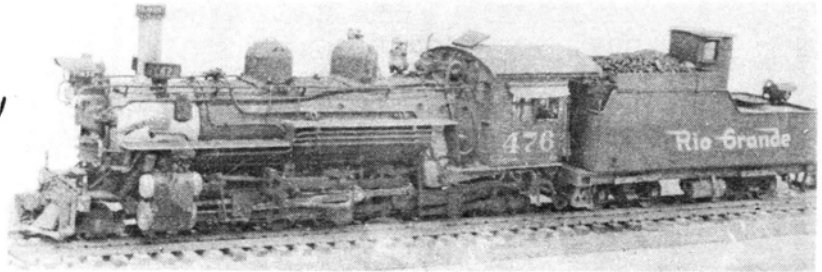
222 N. G ST.
Across from CENTRAL CITY MALL





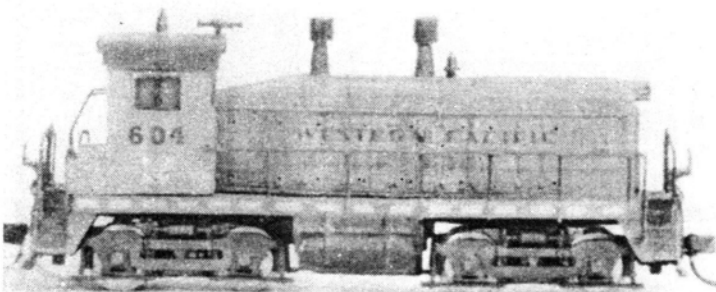
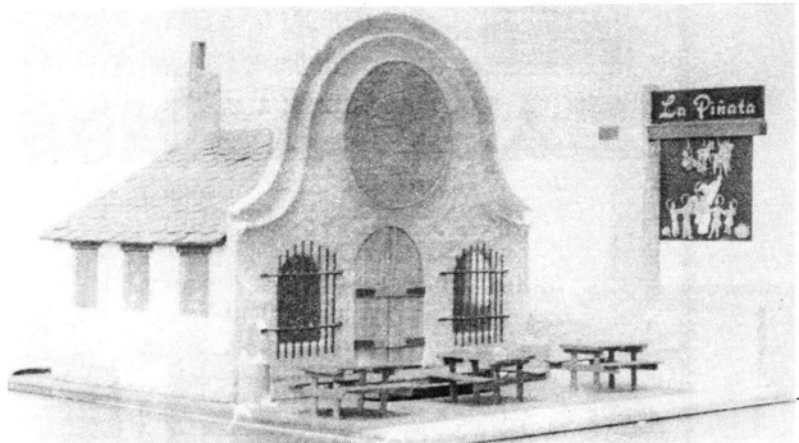
The PCR Mini was well attended; this photo shows just a portion of the crowds. In the foreground is the On3 Module club, with the N scale modules set up in the background.

An On3 model of D+RGW K-28 476/ captured a first in steam for Glenn Joesten.



A well-deserved first went to Robert Jekel for his outstanding model of Santa Fe CF7 2531 (ex-F7A 310C).

Something a little different, a fast-food Mexican restaurant, earned builder Fred Henderson top honors in structures.



Winner of the "Favorite Model, N Scale" category was this SW9 painted and detailed to match Western Pacific 604. Model building credit goes to Virginia Wilken.

NOTES FROM THE UNDERGROUND

by PAUL SCOLES

Hi . . . hope you've had a good Summer . . . now that the weather is cooling off, it's time to get back to work on the ol' layout. While we're at it, let's all get busy on those models and dioramas for the big Cajon Division contest this February. This past year's contest was a huge success and hopefully we can make it even more fun this time around . . . besides, building for a contest does wonders for your modeling skill. Case in point: Recall that last year at this time I mentioned that newcomer Butch Massar was building a diorama for our Division

**MICRO MOTORS
and gearheads**

ALL types and sizes available, plus all accessories for re-gearing locos, and custom installation service.

We carry the new Mason Locomotive Works walk-around momentum throttle. Ideal for micro motors.

Also: Hobbytown, PFM, Westside, NWSL, Sunset, Key Ltd., Lambert, Custom Brass, Kemtron, and numerous craftsman lines.

Send SASE for details.

THE LITTLE DEPOT

AT HOBBY CITY
1238-A S. Beach Blvd.
Anaheim, CA 92804
(714) 828-5080



Contest as a means of improving his modeling ability? Well, Butch took that first attempt of his to the National Convention in Denver and scored 99 points with it. . . good enough for Honorable Mention in the Open Diorama category!! Not bad for a first effort!

The point is obvious. . . Butch is now a highly skilled model-builder, capable of national competition. . . and capable of building a fine layout . . . due in part to the discipline of contest building.

How about a tip from the artist-ic set? At a recent clinic on painting and weathering at The Little Depot, Jim Finnell (owner of Durango Press) mentioned that he makes extensive use of water-colors in weathering buildings and cars. The brand he mentioned is called Dr. PH Martin's Synchromatic Transparent Water Colors. A variety of colors are available (try Sailor's Art Store in Anaheim), but the most useable seems to be #11 light gray. It can be brushed on by hand or air brushed, full strength or diluted. The light gray produces a grayish weatherbeaten look on wood that is very realistic. Why don't you pick some up and give it a try? . . . you'll be pleasantly surprised. . .

Well, enough for now. . . time to get back to work on the layout.

Paul

CAJON DIVISION
ANNUAL BANQUET
AND BUSINESS MEETING

MARCH 11, 1978

BUENA PARK CONVENTION CENTER HOTEL
(NEXT TO KNOTT'S)

COCKTAILS AT 6:00

DINNER AT 7:00

\$ 11.00 PER PERSON

BUFFET STYLE DINNER

FAVORITE MODEL CONTEST
(OPEN TO ALL NMRA MEMBERS)

MAIL TO: JIM GROOVER, 1590 W. PALM LN. #33, ANAHEIM, CA 92802

(MUST BE RECEIVED BY MARCH 3)

THE CAJON
ORDER BOARD

Published 6 times a year by the Cajon Division (No. 8) of the Pacific Coast Region, National Model Railroad Association the months of Feb., April, June, Aug., Oct., and Dec. Deadline for all material is the 15th of the month preceding publication. Only camera ready copy Ads accepted (white background, black ink lettering). Non-commercial (Club-Pike) Ad rates: 6 issues, \$6.00-1/8 page (2-7/8x3-1/16). The Warehouse Section (Want-or-For Sale). Members only \$1.00 per 3 lines. Extra line 20¢ each. Non-members \$2.00 per 3 lines. Extra line 40¢ each. Each line consists of 42 spaces. Commercial Ad rate inquiries and/or material, send to Editor. Editorial opinions expressed in the "ORDER BOARD" are those of the author and do not necessarily reflect those of the Division, its Officers, PCR or NMRA.

SUPERINTENDENT

Jim Groover, 1590 West Palm Lane #33, Anaheim, California 92802

CHIEF CLERK/PAYMASTER

Shirley McFadden, Box 618, San Bernardino, California 92402

DIRECTOR

Duane Leetzow, 9605 Blanchard Avenue, Fontana, California 92335

CHAIRMEN

CONTEST

Dave Menasco, c/o 1238-A South Beach Boulevard, Anaheim, California 92804

MEMBERSHIP NOMINATIONS

Fred Hill, c/o 1238-A South Beach Boulevard, Anaheim, California 92804

PUBLIC RELATIONS

Mac McFadden, Box 618, San Bernardino, California 92402

RAILETTES

Bartletta Suter, 5211 Yale Avenue, Westminster, California 92683

ACHIEVEMENT COMMITTEE

Gary Stenberg, 2506 North Spurgeon street, Santa Ana, California 92706

Ted Van Klaveren, 13321 Nina Place, Garden Grove, California 92630

RETURN TO:
Craig Walker, Editor
3100 West Rome Ave.
Anaheim, Calif. 92804

