



The Order Board

Inside this issue:

| | |
|---------------------------|---|
| Barstow LMIT | 2 |
| "Your" Convention | 3 |
| Modular Layout | 4 |
| PCR Convention Report | 5 |
| Orange County Layout Tour | 6 |
| From the Contest Room | 7 |

From The Top

Ed Hall, MMR

Hello Friends, as I am typing my final report as your Director, I am reflecting the past 12 years or so I have served in the Cajon Division. I have made so many friends I cannot count them, not just in the Cajon Division but in the PSR. Guess where I met all these people — yes you are right — at PSR conventions. I have given all the reasons why I thought you should go but take a minute and ask yourself why you think you should go. One great reason that I didn't tell you before are all the wonderful people that are waiting to get to know YOU! Of all the people I have ever met in my life, the people in model railroading are by far the best. So come on live a little, come down to the convention this September and have lots of fun running' trains. At the convention we will transfer the job of Director to Jan Wescott, Bill Jacobs will be the Superintendent, and Bob Wescott will still be our contest chairman. These people are wonderful people and they really need your support, please do not wait for anyone to ask you to volunteer, call any one of them to see



what you could do for the Cajon Division. After all, this Division is what YOU make it to be, so please be a participating member of your Division. Model Railroading is fun! If you or any of your friends are planning to stay at the Palace Station and have not made your reservations yet please take NOTICE: THE PALACE STATION WILL TAKE RESERVATIONS FOR THE PSR/MODEL RAILROAD CONVENTION GROUP UNTIL AUGUST 13, 2001. Please be aware of this while you're making your plans. After that date the Palace Station will take reservations on an availability basis and at the prevailing hotel rate. Please do not think you will get a room when you arrive for the convention you may have to look elsewhere for your hotel accommodations or pay a much higher room rate. It will cost you nothing to make your reservations,



Las Vegas Limited

Convention 2001

- September 12-16, 2001
- Palace Station— Las Vegas, Nevada
- Don't miss out!

From The Top

(continued)

just give a credit card number and you may reserve your room. Remember to say "PSR/ MODEL RAILROAD CONVENTION" to the reservation agent at this number: (800) 634-3101. One more item, many of you folks may be coming from areas that may have a different climate from that of the Las Vegas area. If you are not aware that we are in a desert area please remember "we sometimes get hot over here." Here are some precautions to make your trip as pleasant as possible:

1. Have the mechanic check the car for a trip through the hot climate. (Coolant & Air Conditioning)
2. Take a cooler with snacks and drinks in it, plain water is best
3. Drink water BEFORE you get thirsty, if you wait till you're thirsty you may already be dehydrated.
4. Tell someone your plans and tell them you will call them when you arrive, let them know approximately when you will be arriving. Call me if you want (702)564-6176.
5. Bring a cell phone. (Borrow one if you don't have one). (There are call boxes on I-15)
6. If the car does break down please stay with the car, do not leave it unless you are going to a call box, help will come to the car first. Put the hood up.
7. Take your time, enjoy the drive. There are many places along the way to "see the locals."
8. If you see a train on the way here, don't try to watch it and drive at the same time, ABS breaking technology really does work well! I speak from experience.

Have fun people. I'll see you at the Las Vegas Limited.

The Barstow LMIT Tour

Bill Jacobs

Out-standing!
Great!
Let's do this again!
These were the reactions of the participants as the
Cajon and LA Divi-



Photo: Ed Hall

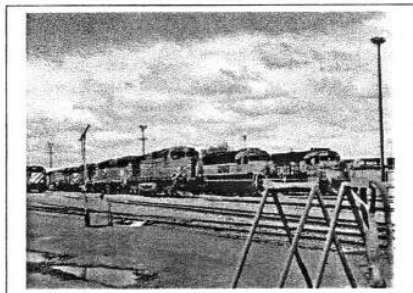
sions shared a great meet on April 21st at the Barstow Locomotive Inspection Terminal. The response to this tour was much greater than expected-

both for the Cajon Division-and the BNSF. Sixty-nine participants showed up, when the expectations were, well, maybe fifteen. Actually, the cutoff was 50! Although the day was a little blustery (okay, snow at Mountain Pass for the Las Vegas crew), things quickly heated up. Denise Gauthier and Martha Rochelle briefed us on Operation Lifesaver and the overall terminal functions. Great attention getters for all of us picture-hounds-maybe we should be a little more aware of our surroundings. Then, in smaller groups, led by Jodie Lee, Bobby Villalobos, and Ken Brutton, we toured the whole facility. I happened to be in Jodie's group. What a knowledgeable young women! For all of us who worry about the new generation, we for sure found

Barstow LMIT Tour

(continued)

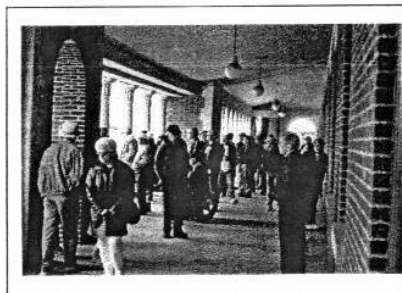
out that things are in fine hands. The Terminal averages servicing 98 locomotives a day and even more interesting, Barstow sees 90 trains a day. We were able to observe a wheel truing



Consists on the ready tracks.
Photo: Chuck Nauman

ing operation, the removal of a traction motor, axle, and wheel set from a truck, and the pulling of a sleeve, piston, and rod assembly from a prime mover. In the afternoon, most of the attendees went on the tour of the Harvey House in the restored Barstow Station. What a fabulous place and the tour, led by Barstow City Council Woman Gloria Darling, was super. When you begin to learn about the people who ran the railroads in the early

part of the last century, an appreciation for devotion to duty in harsh conditions really gives you a little pause to think.



Attendees at the Harvey House.
Photo: Bill Jacobs

Enough of the editorializing! The Route 66 Museum and the new Western America Railroad Museum are worth a lot of time, which most of us did. This was one of our

really good meets-and we owe a tremendous amount of thanks to Ron "HOBOTuck" Tucker, his gracious wife, Dee, and, of course, the BNSF crew, who actually had to put up with us. If we are really good, maybe they will let us do it again!!

"Your" Convention

Jan Wescott

Attention all Cajon members! This is your convention! If you haven't already signed up, it's time to do what it takes to be convention bound. This is one event you can proudly add your name. There will be three days chuck full of model railroading fun for everyone. If you love the hobby of model railroading, it doesn't get any better than this especially in Las Vegas. Someone recently told me the last time Las Vegas did anything this big in model railroading was back in the '70s. Plan now to hop on the bandwagon. Show your support, promote our hobby, and have some fun!

Everything is now in place as we approach "the" day. There is just some of the finishing detail left to be done. The clinic slots are filled, the Exhibitor/Vendor tables are "sold out", and the Train Show has the makings to be a really good one with 5 modular groups and 3 displays. In addition from the registration response forms received, both Auctions will have loads of items and many indicate they will be bringing entries to the Model Contest.

The most heartwarming response has been in the area of volunteers with offers of help to staff the various events. Our convention committee is com-

"Your" Convention

(continued)

prised of six hard-charging members. However, planning is one thing but we certainly couldn't staff every event alone. We'll use every "warm" body we can find and every offer lightens the load and is very much appreciated. We extend a big thank you to all offers.

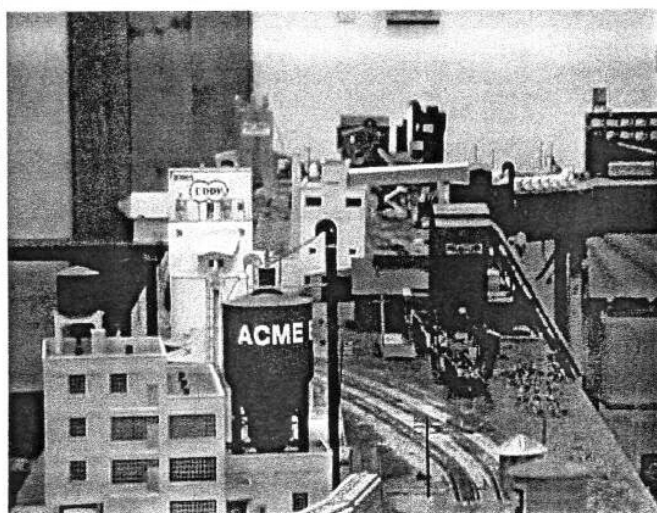
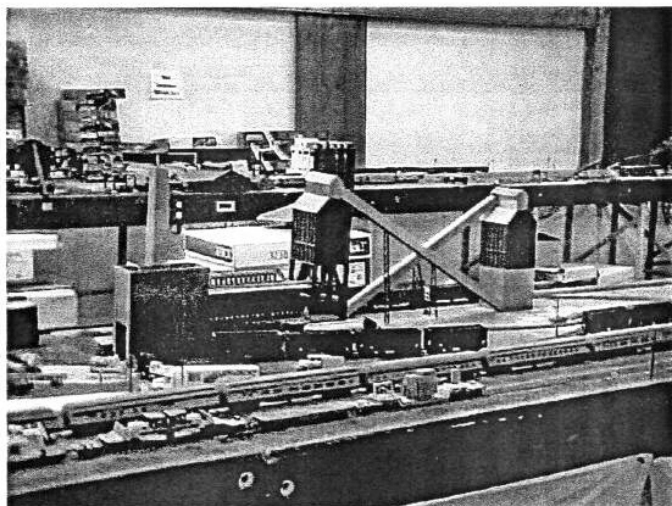


All of the current news and highlights of this convention will be printed in the PSR Dispatch that is schedule to be mailed on the heels (or toes) of this issue of the Order Board. With that in mind I have refrained from duplicating that news here.

I do hope you'll come and join us. I look forward to seeing everyone in September.

Scenes from a Modular Layout

On display at the Las Vegas Limited Convention 2001



PCR Convention Report

Chuck Nauman & Ed Hall

A couple of Cajon Division members from Las Vegas made it to this year's PCR regional convention in San Luis Obispo, CA, May 2-6. Our LA Division also was represented by at least two members. San Luis is about 440 road miles west of Las Vegas, and a pleasant town to visit.

Each convention seems to have a flare and atmosphere all its own. This year's PCR convention was no exception. The convention was hosted by the San Luis Obispo Model Railroad Club, for the Daylight Division of the PCR. It was evident that the organizing committee had given it a lot of thought and effort, and gave us an interesting experience.

Convention events took place in two main venues, about one-half block apart on Monterey St. The Veterans Hall hosted most activities including clinics, model contests and the train show, while the convention hotel provided rooms for clinics and the live auction. Extra Fare items included the convention car (a Red Caboose HO Southern Pacific G-50-30 Composite Side Drop Bottom Gondola), and a variety of prototype tours for attendees interested in the contemporary and historical aspects of railroading in the local area.

Clinics took place during the day and evening. Several were exceptional. Tony Thompson presented a pair of clinics relating to the history of the Southern Pacific in southern California. The applications of sound in model railroading was addressed in detail by Jim Wells. Cindy Winters presented a clinic on the phases and detailing of SP SD45T-2 tunnel motor locomotives. Identification of diesel locomotives was presented by Mark Lang in the context of developmental history. Jim Providenza discussed realistic model railroad operations, and Charlie Pigot showed how to make exquisite oak trees.

No fewer than 16 layouts were open for viewing during selected hours, mostly in the evenings. The live auction took place on Friday evening and went smoothly; over 200 items were offered in a little over two hours. The model and photography contest was held in a large room at the Veterans Hall. Awards were made at the banquet which was held under a canopy in the parking lot of the Veterans Hall on Saturday evening. The banquet consisted of a Santa Maria style barbecue, and was a pleasant contrast to the type of sit-down banquets that seem to be the norm in PSR and elsewhere.

The train/trade show began at noon on Friday and ran through Saturday and Sunday. More than 35 vendors were present, including a table promoting our "Las Vegas Limited" 2001 convention, staffed by none other than our Cajon Division Director.

All-in-all the PCR convention drew just over 200 registered participants, and the train show attracted over 550 non-convention adult attendees from the general public. Not too shabby. The next PCR convention, entitled "Shasta Daylight 2002," is May 1-5, 2002, in Redding, about 150 miles north of Sacramento. Hmm... the Keddie Wye lies about half way between Redding and Reno. Might be interesting.

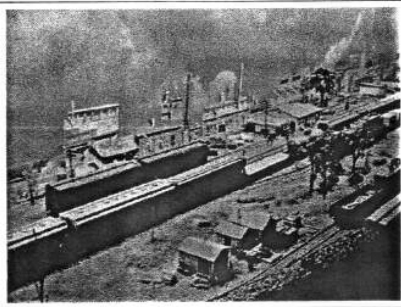


June 2001 Orange County Layout Tour

Steve Connolly

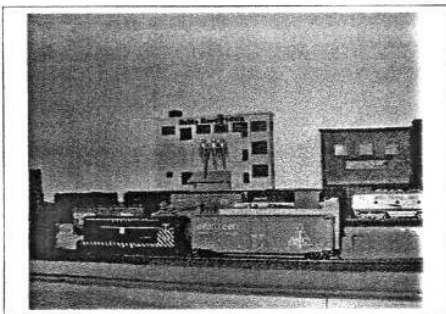
The tour started at the home of Bill Scholz where Todd Scott greeted everyone with maps and helpful directions to the other four layouts. Bill's layout is situated in an above the garage "bonus room." A through the wall track leads to an extension in the hallway leading to the main room. The extension rests on top of hip-high cabinets providing a super-

detailed introduction to the main layout area. This layout is as complete as any you will see. Bill also had an On30 setup on the dining room table complete with



Bill Scholz' Layout
Photo: Ted Johnson

a snow base and the snow village buildings. His modeling expertise was displayed in a 1/6 WW II diorama which covered the top of the coffee table. Bill's modeling is museum quality.

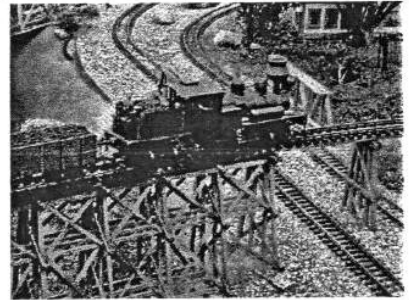


Bob Chapparo's Layout
Photo: Ron Tucker

Bob's layout did not appear on the original schedule and was a late addition.

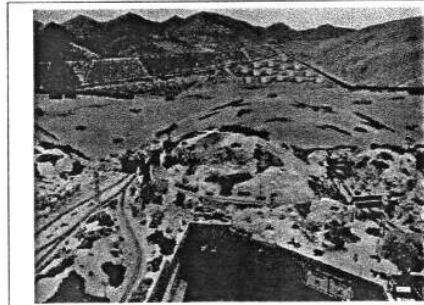
The second stop was Bob Chapparo's layout on the second floor in a spare room. This layout is under construction and will have three levels when complete.

Todd Brodie's G-scale garden layout was the third stop. The overcast sky and fine drizzle added to the effects of this outdoor layout. Watching the Shay work the shiny



Todd Brodie's Layout
Photo: Ted Johnson

wet rails was a thrill. This layout is complete with an excellent balance of established plants. The portable control system was one of many noteworthy features.



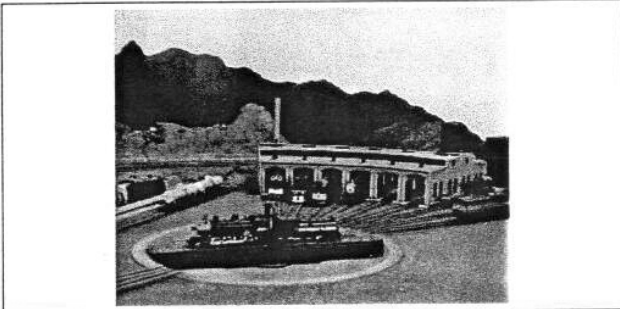
Dennis Ivison's Layout
Photo: Ted Johnson

The fourth layout on the tour was Dennis Ivison's garage-filling N-scale empire. Dennis is in the process of changing locales from San Pedro and other harbor scenes to the Imperial Valley. He has captured the feel and space of the new locale. This one is great now and will be awesome when complete.

The last layout on the tour was Wolf Blandran's N-scale SP. This layout is complete. The overhead lighting behind valences and the curtains covering the front of this chest-high layout give it a finished feel. This shelf-style layout lines one wall of a double garage and is four feet wide at each end to allow for loops. Wolf's layout is a great example

June 2001 Orange County Layout Tour

(continued)



Wolf Blandran's Layout
Photo: Ted Johnson

of what can be done. Thanks to Todd Scott for setting up this fine tour.



Todd Brodie's Layout
Photo: Ted Johnson

From the Contest Room

Bob Wescott

As I sit here looking at the model I'm working on, I suddenly realized that there is less than two months left before our Convention. Fifty-three days to be exact (from now).

Repeating all that has been said before about contests would be a waste of time. Everyone knows what will be going on and what to expect. Nothing but excellent models made by all of you. I've seen a couple that will be entered from the Las Vegas area, along with one or two that are in the works. It's going to be interesting.

So far, I've only heard one model that will be entered into the Youth Category. Hopefully more will show up, because one model does not make a contest. We need to encourage the younger folks to get in gear and get on the bandwagon. There's so much for them to learn about railroads

and model railroading.

For all of you U.P. fans, there will be a contest held especially for you. This special contest will be judged and prizes awarded by a representative of the U.P. The theme will be, naturally, U.P. Models, entered into the regular contest, from all categories and scales, will be judged. The winner will be the one that best represents the U.P. theme in any form, be it a locomotive, passenger car, freight car, structure, or whatever. First prize will be dinner for two at the El Cortez. Second and third prizes will also be awarded.

I've expounded (there's that 25 cent word again) enough, except to say that I'll see you in September in the Contest Room, with my model and hopefully yours right along side.

Membership Application
Pacific Southwest Region – National Model Railroad Association

Date _____

Name _____

Address _____

City _____ State _____ ZIP _____

Telephone () _____ Occupation _____

Primary Scale _____ Email _____ Date of Birth _____

New [] Renewal [] PSR # _____ NMRA # _____ Exp. Date _____

| <u>Class of Membership</u> | <u>NMRA</u> | <u>PSR *</u> | <u>BOTH</u> |
|---|-------------|--------------|-------------|
| Regular | \$34.00 [] | \$7.00 [] | \$41.00 [] |
| Youth (Under 20 Years) | \$22.00 [] | \$2.00 [] | \$24.00 [] |
| Affiliate (No Bulletin or Local Publications) | \$17.00 [] | \$4.00 [] | \$21.00 [] |
| Family | \$ 7.00 [] | \$1.00 [] | \$ 8.00 [] |

* YOU MUST BE A MEMBER OF THE NMRA TO BE A PSR MEMBER.

Send this application and your check (made payable to "Pacific Southwest Region, NMRA" to: PSR—NMRA, Dottie Finch, 8808 N. 37th Avenue, Phoenix, AZ, 85051-3707. For information on NMRA or PSR (or both) Life or Affiliate Life Membership, contact Dottie Finch at gramdottie@aol.com or (602) 973-4231.

Referred By:



Return Service Requested

The Order Board
4813 Plata Del Sol Drive
Las Vegas, NV 89121