

# The Cajon Order Board



VOL. 4 NO. 4

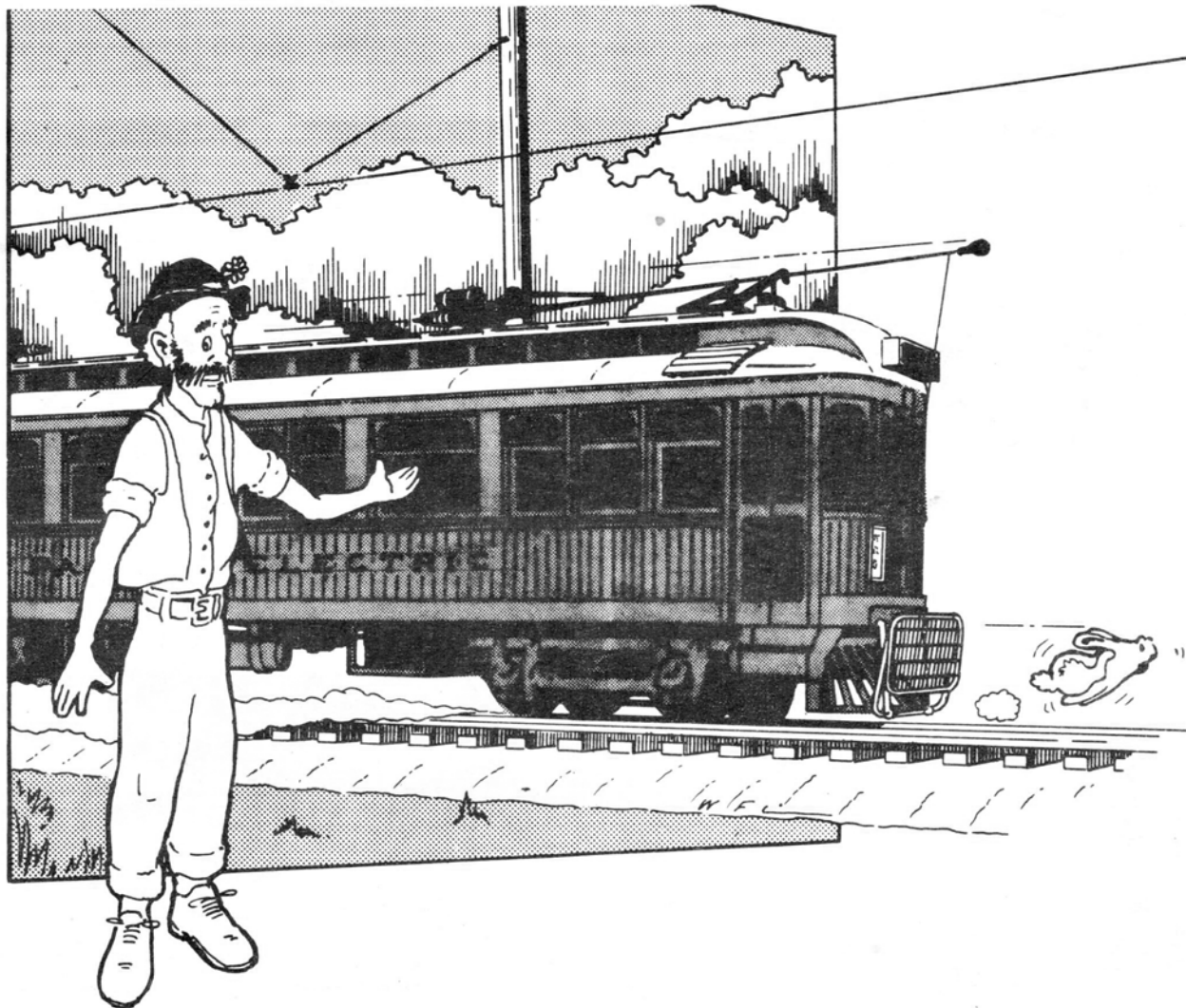
CAJON DIVISION

PCR NMRA

AUG 1976

CAJON DIVISION FALL MEET — OCT. 10

ORANGE EMPIRE TROLLEY  
MUSEUM, PERRIS



### ELECTIONS ARE COMING!!

Elections will be upon us very soon for Superintendent, Asst.Supt., Chief Clerk/Paymaster. If you wish to run for an office, please forward a letter with a brief, but informative statement--of yourself, a 1-3/4x2-1/2 (wallet photo) black & white glossy of good clarity (NO polaroid), & the office you are running for by Sept.15. Send to Fred Hill, Nominations Chairman, 1238-A Beach Bl Anaheim, Ca. 92804.

### BOARD MEETINGS

- JUNE 6 Meeting called, Rialto, 1:30 P.M.-----  
to bring a motion before the Exec. Board to present a bid to the PCR for the 1977 MINI & 1979 ANNUAL CONVENTIONS..
- JULY 11 Meeting called, Anaheim, 12:00 P.M.....  
to finalize Flyer and activities for the PERRIS MEET Oct.10 and the Feb.26, 1977 Banquet, Buena Park Convention Center... Supt.made a motion to **implement "MINI"** Meets throughout the Division. Motion carried. (See Shop Talk)
- JULY 25 Meeting called, Rialto-San Bernardino---  
Convention Center to finalize plans for the '77 MINI Convention Site. San Bernardino was chosen for the Mini. Shirley McFadden was elected as Convention Ch.

### \*\*\*\*\* BY-LAWS AVAILABLE \*\*\*\*\*

The answers to some or all of your questions on functions of your Division are contained in the By-Laws & Manual of Operations available to you upon receipt of a SSAE and 2-13¢ stamps. Send to Secretary, Andy Anderson. (address back cover)...

OUR "MANY THANKS" AGAIN TO BILL FLINN.....Even with his busy schedule he managed to design another clever cover for our ORDER BOARD(Don't miss his funny cartoon below!)We appreciate you BILL!



WHERE IN THE \*X\* ARE  
MY MAGNIFIERS?



← 2 →

### THE DIV. STILL NEEDS VOLUNTEERS!

Publications Committee (EDITOR+2assistants)  
Achievement Committee, Activities Committee  
Contest Committee, Membership Comm, Public  
Relations Comm., Railettes Com,Registration  
Comm.,Hobby Shop & Advertisement Commit' .  
Please contact appropriate chairman, or the  
Div.Secretary. (addresses back cover O.B.).

**HOBBY WAREHOUSE**  
HOBBY & CRAFT HEADQUARTERS  
Factory Authorized Repair Service  
SPECIALIZING IN MODEL RAILROADING -  
RADIO CONTROLLED SAILPLANES & HELICOPTERS  
**OPEN TO THE PUBLIC**  
531-1413  
4128 E. SOUTH LAKESIDE BL.  
1/2 BLOCK WEST OF LAKESIDE BL.

### TRIVIA !

IF YOU HAVE ANY BLACK & WHITE PHOTOS, DRAWINGS,CARTOONS ETC. THAT WOULD BE OF INTEREST TO THE DIV.,PLEASE SUBMIT THEM TO THE EDITOR

DON'T FORGET ORANGE EMPIRE TROLLEY MUSEUM ON OCTOBER 10th, PERRIS, CALIF.BRING THE FAMILY MINI TRAINS IS HAVING A"KIT BUILDING"CONTEST SUPPORT THE NMRA-PCR AND "YOUR DIVISION"...

RAILETTEES: WE NEED YOU! OUR DIVISION'S NEW "FACE-LIFT" REQUIRES YOUR HELP AND SUPPORT WITH OUR HEAVY SCHEDULE OF COMING EVENTS . PLEASE CONTACT THE RAILETTE CHAIRMAN.....

## **HARPER'S HOBBY SHOP**

Steams

Into

**SAN BERNARDINO,  
CA.**

**222 G STREET**

**Next to Central City Mall**

**Still in RIVERSIDE, CA.**


**6568 MAGNOLIA AVE.**

**We Specialize In Railroads**



\*\*\* BRASS \*\*\* \*\* WESTSIDE & PTM \*\*\*  
 \* BUY & SELL LIONEL \*

TRAINS N-HO-0



**DICK'S  
HOBBY  
SHOP**

Bob Longstreet  
(714) 893-4911

13079 Springdale Street  
Westminster, CA 92683

CLOSED WEDNESDAYS

HAVE YOU ACQUIRED A NEW  
DIVISION MEMBER TODAY??  
YESTERDAY??LAST WEEK???  
HOW ABOUT TOMORROW.....

If each old member did  
not take "NO" for an  
answer and acquired a  
new member, and that new  
member acquired another  
one and that new member  
acquired another one &  
that one...enough! SPIKE  
is getting dizzy! Just  
think how our Division  
would grow!



#### "MINI TRAIN" CLINIC SCHEDULE

These are tentative clinics. 8 PM Mondays  
Check ORDER BOARD Ad for address. (off the  
San Diego & Newport Freeways).

AUG. 9 Board-by-Board Construction  
AUG. 16 Kitbashing Loco's  
AUG. 23 Painting & Weathering Loco's  
AUG. 30 Signaling on your R.R.

(Donot have a complete Schedule for Sept.  
but here is a sample of coming clinics....  
**Sound Systems**, Making Better Trees, Detailing  
Made Easy, Better Track Pickup, How to  
Construct Realistic Scenery, How to Const-  
ruct Better Framework, etc! SEE YOU THERE.

"OUR MANY THANKS" to KEN LAMB & JACK ROWLEY  
of **MINI TRAINS**, Costa Mesa for the very  
large donations of BRASS, kits, RR figures  
and much much more which made our AMTRAK  
trip a success. THANKS GUYS. ----- SPIKE

#### TIME TABLE '76'

AUGUST 10-15



SEPTEMBER 4-5

SEPTEMBER ?

OCTOBER 9



OCTOBER 10

OCTOBER 23

OCT. 29-31



NMRA "RAILFUN" CONVENTION  
Hyatt Regency, Rosemont,  
Illinois

SILVER STATE DIVISION 2nd  
ANNUAL COMSTOCK "MICRO"--  
VENTION. (See flyer).

L.A. DIVISION MEET  
Rocketdyne -- Canoga Park

PIONEER WESTERN MODEL RR  
CLUB...ANNUAL SWAP MEET..  
9AM-12noon. 7422 Orange-  
thorpe (rear) Buena Park..  
Sellers \$1 (card table  
space). General Public  
Free.

CAJON DIVISION FALL MEET!  
Orange Empire Trolley  
Museum, Perris, Ca.  
11AM-5PM. (See Flyer).

ROUNDHOUSE GANG ANNUAL  
OPEN HOUSE. Cope Jr. High  
(See SHOP TALK section).

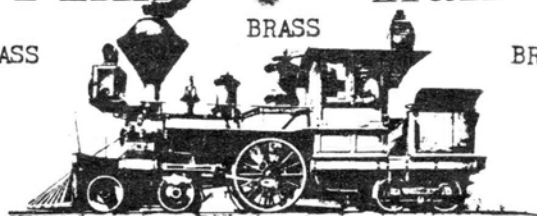
PCR '76' MINI CONVENTION  
Santa Barbara. For more  
info. send SSAE to: Ross  
Graham, 103 Dearborn Pl.,  
#17, Goleta, Ca. 93017

## Mini Trains

BRASS

BRASS

BRASS



NARROW GAUGE SPECIALISTS

WE STOCK & REPAIR ALL GAUGES

O - S - HO - N LIONEL & FLYER

OPERATING  
HO-HOn3  
&  
TRACTION  
LAYOUT

TRY OUR  
NEW  
R/C  
DEPARTMENT

Mon.-Fri. 10-9.

(714) 549-1596

1113 Baker Street  
Costa Mesa, Ca. 92626

Sat. 10-6.

Sun. 10-5

\*\*\*\*\*  
\*ASK ABOUT OUR\*  
\*MONEY SAVING\*  
\*BONUS PLAN\*  
\*\*\*\*\*

Jack Rowley  
Ken Lamb

## "RAMBLINGS JR."

If you missed the AMTRAK Meet for one reason or another, shame on you! It was one of our "BEST" Meets of this young Division. I say BEST because my family and I have finally enjoyed a meet.... without being in three places at once! The scene at the Santa Ana Depot one-half hour before our boarding time looked like a "troop train" going off to war! (old home week). There were also of familiar faces and new ones too, striking up new friendships and renewing old ones. The ride down to San Diego-Sea World was fantastic. More MRR being talked over than you could SHAKE A STICK AT. The best time of all was had by the Lil'Steamers...which will be long remembered well into their adulthood...Wish to thank KEN & JACK of MINI TRAINS, Costa Mesa for the Brass SW Switcher and the large box of kits etc. for their donations to the Division for our meet.....I sure tried HARD for the brass again and MISSED...(guess I'll never live this one down!Huh, Ray?)RAY & LINDA SMALL and the boys hid the brass from me after RAY won it! He had his hand wrapped around the box like Jesse James was coming.....Next time RAY...I WIN!.....Everyone had a great ride down. After our bus delivered us to SEAWORLD, I did not run into more than "2" modelers at one time, if that..... until time to leave and I became panicky when THE CHAPARRO FAMILY hadn't arrived at the bus and it was taking off without them back to the train depot.....(but they made it "by the skin of their teeth!") AND MINE.....Everyone was able to take in the complete park or at least the most interesting parts. Hope to have a couple of photos in the next issue of the O.B.....I know the ROGER's BROS. had a good time and so did DAVE SACKS (I think he snoozed on the way home...)...The WENTWORTH's of Villa Park won some merchandise in our drawing. The Free Merchandise Contest was won by the JOHN HOFF GROUP. WARREN & PAT LAMBRICH was the "first" to send in their registrations the "first" to arrive at the Santa Ana Depot, the "first" to VOLUNTEER to help their division.... Thanks WARREN & PAT.....keep on comin' FIRST! WE LOVE IT! CHESTER EASTER was in attendance with his Lil'Steamer TAVA. She's only "4" but attends our meets faithfully! We are waiting for her to become our RAILLETTE CHAIRMAN!.....CLAYTON WEMMER & FAMILY, it was good to have you with us. He tells me his very large RR is running strong. One of these days we will make it CLAYTON ..... I turned around and ANDY BUCO had a "winner" in his hand! Two good tickets for merchandise...and his wife SANDI carried away the prizes!!Good to have you with us SANDI.....The JONES FAMILY came from La Puente and they didn't miss one thing! even winning a prize.....JEFFREY & KATHLEEN HILL & FRIEND of Lennox, TERRY & LISA BARRETT, ANDY AND "MOM" KATY ANDERSON.....Well, I don't know who enjoyed themselves most! Tried to "hail" down ANDY A. but he walks so fast he stirs up the dust... Needless to say I was able to sit down...and take in the beautiful day with my "family secretary" and Lil'Steamer....beautiful breeze, no smog and my first trip to SeaWorld of which I thoroughly enjoyed. The ride back was even better for me...I rested in the seat and enjoyed the whole ride. Hope to come up with something next year on the same order...ANY SUGGESTIONS?.....SEE YOU ...ALL. OCTOBER 10th at PERRIS..... "Frank".....



MAKE TRACKS TO SEE OUR TRACKS  
OPERATING H.O. & N. GAUGE LAYOUTS

**Barry's Hobbies**

SPECIALIZING IN H.O. & N. GAUGE TRAINS

**636-0540**

• Complete Line of Model Kits      • Dremel Tools

Mon.-Thurs. 12-8 - Fri. 12-7 - Sat. 12-4  
13871 EUCLID - S. E. 2 BLS N. OF G. G. HWY. AT G. G. BLVD.



LARGE SELECTION  
"BRASS"  
HO      HON3      N      O

### END OF TRACK

MODEL TRANSPORT SUPPLY  
COME BY AND SAY "HELLO"  
RAILROAD SPECIALIST AND REPAIR

JACK J. AMBROSE      630 S. BREA BLVD.  
(714) 529-4474      BREA, CA 92621

### LET'S "UNITE"!

THE SIERRA DIVISION will put forth a resolution to distribute Convention Funds! After all obligations have been met the rest of the funds will be distributed. 40% to the sponsoring Division, or Group.....and the rest on a per capita basis to the rest of the Divisions. This motion will be made at the Mini Convention in Santa Barbara Oct. 29-31. PLEASE WRITE to our Director and let him know your feelings on this matter. OUR PCR PRESIDENT, CAJON DIV.EXEC.BOARD, AND SUPT....feel this is a move in the right direction in order to have stronger Divisions. LET'S ALL UNITE....ON THIS MOTION AND THE MOTION TO HAVE THE PCR HELP FUND EACH DIV.'s MEMBERSHIP BROCHURES.....



## CAJON DIVISION FALL MEET - "NOSTALGIA DAY"

**PLACE:** Orange Empire Trolley Museum  
Perris, California

**TIME:** 11 A.M. to 5 P.M., Sunday Oct. 10, 1976

**REGISTRATION:** Members-50¢ or (White Elephant).....  
Non-Members-\$1.00 or (White Elephant)..  
Lil'Steamers-Under 7 FREE.....

**WHAT IS A "WHITE ELEPHANT?"**-A Model Railroad item with a minimum value of 50¢, wrapped and sealed for auction

### FAMILY FUN IS NOSTALGIA DAY!

Trolley and "STEAM" rides, tours of shops and museum, swap mart, door prizes, special drawing, clinics, free merchandise contest and white elephant auction.....

..... **"FUN-DAY" FOR THE WHOLE FAMILY** .....

**CLINICS:**

1. Hand-lay your own track: Chet Huntley
2. Build your own soldering machine: Mac McFadden
3. Make Better Rail Contacts: Frank Barone

**CONTESTS:** Rails & Raillettes MUST BE PCR MEMBERS TO ENTER JUDGED EVENTS.

**JUDGED EVENT:** Passenger Traction Kit

**POPULAR VOTE EVENTS:** General Traction: Kit or scratched  
Structures: Diorama or Display  
Craft: Anything "railroady"

\*\*\*\*\*  
\*\* B R A S S \*\*  
\*\*\*\*\*  
And..... other "expensive"  
merchandise to be given  
away in our Door Prize  
Drawing, Special Drawings,  
and FREE Merchandise Contest  
\*\*\*\*\*

**BAKE CONTEST:** Let's have some fun and at the same time, earn some money for the Division. Bake your favorite cake, cookie bar or pie recipe which will be judged by popular vote: **"EYE APPEAL"**! They will be included for sale in the WHITE ELEPHANT AUCTION. You can enter as many as you want. Why not let the Division see how good a cook you really are? **RAILS TOO.....**

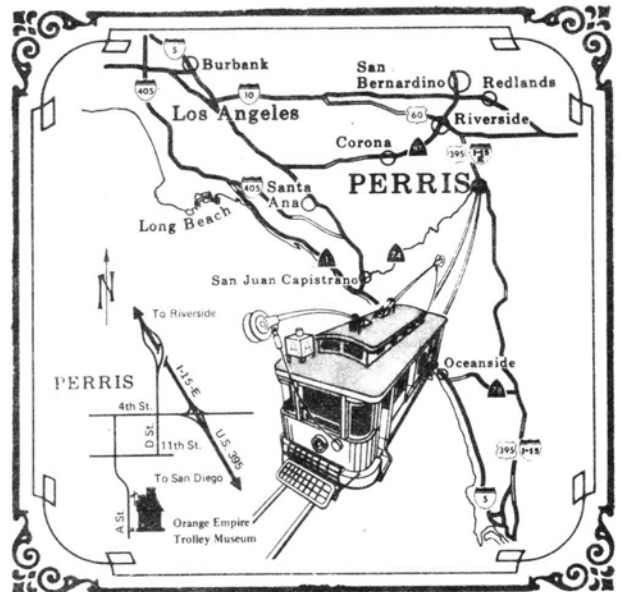
**LIL'STEAMERS:** Draw a Trolley--supplies are furnished at meet  
Carve a Trolley--out of a bar of soap at home!  
12"x 12" Diorama or Display

**SWAP MART:** Bring your own table and chairs. \$1.00 Donation.

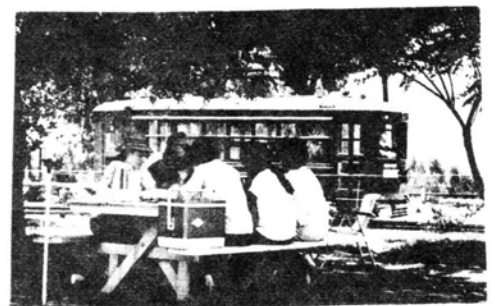
### "CAJON DIVISION FAMOUS "DINER-CAR REFRESHMENT STAND"

Hot Dogs, Chile Dogs, Sloppy Joes, Potato Salad, Snack Chips, Soda pop, Chile & Beans, Corn on the Cob, Fresh Fruit, Baked Goods, Coffee, Fresh Pop-Corn...OR "Bring your own Picnic Lunch".

**FOR ADDITIONAL INFORMATION CONTACT:** ANDREW BUCO (714) 586-6317  
24225 Jagger Street, El Toro, Calif. 92630 (SEND SSAE)..  
\*\*\*\*\*



**"BRING YOUR CAMERA"**  
and plenty of FILM  
**"STEAM"**  
is up at the Museum!



## "SHOP TALK"

If you are ever in the area of the HOBBY SHOPS THAT CONTRIBUTE TO THE DIVISION and ADVERTISE in the ORDER BOARD, show your appreciation when dropping by to "Say Hi!" (bring money too!) and feel free to discuss any problem you may have in the Hobby. They are by far some of the best people (bar none) that we the modelers have around...father confessor to some, home away from home for others (but I wish I could have some of them write in and let me know what is happening around their "North 40!").....At the last Div.Board Meeting July 11, your Supt. proposed to implement "Mini Meets" between our regular meets for the out-laying areas of the Division. WE NEED HELP ON THIS though. We reach out into "9" counties. Need what I will call "Section Foreman" for that particular area to co-ordinate the Mini Meet, pick the site, contact newspaper, distribute flyers, etc. The Division Committee will give all the help needed plus "SHOW UP"---for the Mini Meets! If you feel "brave" and would volunteer, contact the Supt... We have alot of non-members out in the Division, (small Hamlets) like Needles, Blythe, Palm Springs, Indio, Hemet, Sun City, Lone Pine, and counties in Nevada etc., just to name a few. The Division Board Members are striving to come up with something for EVERYONE and erase that cliché of "WHAT CAN THE DIV., PCR, NMRA DO FOR ME!?" For one thing, the Conventions that we are striving to bring down here, better meets, information to the members of "what is going on" throughout the Division, etc. It is not easy BUT WE ARE TRYING! If you need help or have suggestions, please send a letter to the Supt. or Board Members, "the Buck stops here!"

If you will notice in the TIME TABLE, a date change for PERRIS from Oct.31st to OCT.10th..... for our FALL MEET. Was informed that 90% of the Div.Exec.Board and a few of the Division Members will be at the PCR MINI in Santa Barbara. No one to run the meet on "Grenlin Day".....

Last chance.....the DIVISION MEMBERSHIP DIRECTORY will go to press Sept. 1st. If you have not sent in your information on guage modeling, private RR, name of club, conditions for viewing & telephone number.....sorry.....until next year. Send all info.to Editor--Caj.Div.Members Only

FEB. 26, 1977 has been scheduled for our ANNUAL BANQUET in conjunction with our: "FIRST ANNUAL MODEL RAILROAD SHOW" at the Buena Park Convention Center, adjacent to Knotts Berry Farm.(there is a BAR there Jack!)...

AN OPEN BOARD MEETING has been scheduled for Sept. ~~18th~~, 8:00 P.M. at 4080 W. 1st.St., Santa Ana Club House, entrance in front) for the purpose of co-ordinating the Banquets, Model RR Show. Need Help in all areas. Quite a few volunteers are needed as we hope to attract "5,000" for the show and double our Banquet attendance compared to Feb.'76'. We have a few pieces of brass for our coming Banquet lined up PLUS lots & lots of "surprises" to spring! Not to mention a trunk load of merchandise for door prizes and drawings. If you were at the Feb.'76' affair and gandered at the donations..."double that" for Feb. '77'.. If the Eastern End of our Division cannot make it to the Sept ~~18th~~ meeting, PLEASE contact: MAC MCFADDEN (address back of Order Board), for the details. The Exec.Board urges you to attend, as they are striving to bring all factions of the Division together. WON'T YOU HELP?.....

OUR MEMBERSHIP IS PICKING UP! every day..The way our Supt.is going, our Div. will be over the 350 mark by Christmas!Will you offer your assistance to help build our membership even larger?The PCR has been contacted to fund the Division's for a membership brochure to pass out to prospective members. If the idea sounds good,please contact our Director to put forth the "motion"to the PCR Board Meeting at the Mini Convention Oct. 29-31, in Santa Barbara.

DIVISION BOARD MEETING "OPEN" has been called: for the purpose of having our Convention Chair-man present the overall diagram for the "77"MINI-

(contd.Pg.7)

Specializing in Brass Imports • Custom Painting  
Scratch Builders Supplies



**THE BACK SHOP**  
Exclusively Model Railroadino

DENNIS WEAVER

14341 Beach Blvd., Suite F  
Westminster, California 92683  
(714) 893-2552

HO\*\*\*\*\*HO<sub>3</sub>\*\*\*\*\*O\*\*\*\*\*On<sub>3</sub>

LARGE SELECTION BRASS IMPORTS AND  
SCRATCH BUILDERS SUPPLIES

CUSTOM PAINTING & REPAIRS

HOURS

WEEKDAYS 5-8PM\*\*\*SAT.10-6PM\*\*\*SUN.12-4PM  
CLOSED WEDNESDAY

# NOTES FROM THE UNDERGROUND.....By Paul Scoles

Last time we talked about CHALK WEATHERING.....So, why don't we add another weathering technique to the list? That is, the use of a wire brush on wood structures and sometimes on wood freight-cars. I use two types of wire brushes.....a stiff, steel bristled brush with a wood handle (resembles a toothbrush).....and an old suede shoe brush with soft copper bristles.....The stiff bristled brush is used the most, as it quickly "stresses" the wood, while the suede shoebrush acts more slowly for a more subtle effect.

The way I use a wire brush is this: for a structure or freight car, lay each wall down on a flat surface---brush vigorously in the direction the boards go (vertical for scribed siding and board and battin, horizontal for clapboard)-----if your structure or car is made of individual boards, brush each piece separately. The brushing action removes the softer particles of wood, leaving the border portions standing up, for a weather-beaten or stressed look.

Now, if you are doing a structure, take a sharp X-acto knife and make some small cuts across some of the boards to represent board ends.....add nail holes with a pin (insert a headless pin in a short length of  $\frac{1}{4}$ " square basswood for easier handling) in appropriate places.

Next, stain the walls or boards with a dark wood stain-----I prefer floquil's walnut or natural pine diluted slightly----or you could use "weather-it" or even diluted Campbell's tie stain..... Whatever, the idea is to stain the wood to represent "weather-beaten" unpainted wood. Often, in staining the wood, you can enhance the effect by wiping the stain off with a paper towel immediately after brushing it on.

Now, you can assemble your structure or freight car as is, "Painted" to represent "unpainted" wood...or you may want your model to be painted more conventionally----if so, the best way to "show-off" your weather-beaten wood is to apply the final color with a "dry brush"...That is, dip the brush into the paint and then wipe most of it off before applying it to the model...The best way to describe it is to apply the paint in a kind of "scrubbing" manner. When you do this properly notice that the paint only sticks to the high spots, the grain that wasn't removed by the wire brush-----This adds color to your wood, but allows the darker wood color to show through. The end result is a "peeled" paint effect.....like that of an old structure or freight car in need of a new paint job.....Additional uses of your wire brush are many-----you can use it on old fences, pine tree trunks, and even the ties on your handlaid track!

SPEAKING OF "HANDLAID TRACK".....I hope some of you can catch Lonnie Shay's Clinic on how to lay your own track and switches.....Friday Night, Aug. 13th at THE LITTLE DEPOT...Lonnie's Dy'n Glory RR is entirely handlaid and operates "flawlessly," so he knows what he's doing! Lonnie's also the guy who designed the "Shay Wood Miter". That is getting some attention in the National Press...right now...The Miter is marketed by our fellow Cajon Division Member Mr. T. R. Smith and his FRONTIER REPLICAS CO. and worth considerably more than its' \$21.95 price tag! Enough for now...hope to see you all at our weekly clinics at THE LITTLE DEPOT.....PAUL .. ..

## THE LITTLE DEPOT - ANAHEIM MINI-CLINIC SCHEDULE-(TENTATIVE)

8:30 PM - Friday Nights

(Clinics scheduled 30 Min. to 1 hour):

- AUG. 6 "Handlaid Track and
- AUG. 13 Switches".....Lonnie Shay
- AUG. 20 "How to Install Switch Machines  
and Choke Cables".....Lloyd Harms
- SEPT. 3 "Using Backdrops".....Tom Daniel
- SEPT. 10 "Model Photography".....John Olson
- SEPT. 17 "Painting & Weathering  
Structures".....Lonnie Shay
- OCT. 1 "Detailing Diesel Locos".....Craig Walker
- OCT. 8 "Soldering Techniques" and.....Lonnie Shay  
"How to Detail Brass Locos".....Paul Scoles

## MICRO MOTORS and gearheads

All types and sizes available, plus all accessories for re-gearing locos, and custom installation service.

We carry the new "Mason Locomotive Works" walk-around momentum throttle. Ideal for micro motors.

Also Hobbytown, PFM, Westside, NWSL, Sunset, Key Ltd., Lambert, Custom Brass, Kemtron, and numerous craftsman lines.

Send SS&E for details.

## THE LITTLE DEPOT

AT HOBBY CITY  
1238-A S. Beach Blvd.  
Anaheim, CA 92804  
(714) 828-5080



SHOP TALK (contd. from Pg. 5)

CONVENTION. The approximate date is the middle of Nov. PLEASE drop the Supt. a note on where you think the location should be for the Board Meeting. AND, WE DO NEED VOLUNTEERS.....

THE ROUNDHOUSE GANG of REDLANDS has finally acquired a permanent club room located at the National Orange Show in San Bernardino, with an overall size of 35x60 (you modelers in the San Bernardino area in HO-n can do a lot with that space). They are inviting only the serious MRR to join and help build the club up. Contact Joe Walker, 236 Doyle Ave., Redlands, Ca. 92373.. The Roundhouse Gang--Open House is coming around again, Sat. Oct. 23rd, 9AM-4PM at Cope Jr. Hi School, 1100 W. Cypress Ave., Redlands. Bring your own lunch or try the many restaurants in the area. The attractions have shaped up to favorite model contest categories: steam, diesel, & freight cars, structures, railroad depot paintings, HO switching layout (John Allen time saver) contest. Imitation train whistle contest (soda pop bottle only), Lionel Loco racing contest (two oval tracks 0 and O27) winner to stay on track for 2 full laps at full throttle..... Also, Santa Fe will furnish a full day of prototype activities. Swap Meet (tables furnished, 5% of your profits donated to the group).

We hear that THE ORANGE COUNTY FAIRGROUND O-GUAGERS will be moving next August 1977!.....

THE SADDLEBACK MODEL GROUP of So. Orange County has about 26 members now. Not bad from 7 since the last of "75"! (I told you so!).

THE PIONEER WESTERN MODEL RR CLUB ANNUAL SWAP MEET coming up. Don't miss it. Last year alot of merchandise changed hands to the lucky ones that showed. Should be bigger this year.(check TIME TABLE).

THE F.L.A. MODULE N GUAGERS of ORANGE CO. are still open for members. Meetings are held the first Wednesday of each month at 7:30 P.M. at FRANKS HOBBY SHOP, ORANGE. Contact Tom Thomas, 666 N. Tustin Ave., Orange, Ca. 92667.

THE HOn3 MODULE CLUB ready for sign-up. Contact Paul Scoles at LITTLE DEPOT at HOBBY CITY, in Anaheim for details and date of initial group meetings.

NARROW-MINDED NARROW GUAGERS meetings Thursday Nights--to work (not too much work!) and to run trains on HOn3-Layout (LARGE), 13321 Nina Pl., Garden Grove, 92640 (714) 537-1746.

IF YOU HAVE ANY NEWS: OF YOUR GROUP, CLUB, OPEN HOUSE, ETC., WE WELCOME YOU TO SUBMIT IT FOR PUBLICATION IN THE O.B...FORWARD TO THE EDITOR.

AS OF AUG 1st "CAJON DIV" NEW MEMBERS  
"WELCOME ABOARD"

MRS RONALD ARNOLD  
RAY ABRAMOWICZ  
ROBERT BADER  
CRAIG BENNETT  
ARNOLD GAONA  
LEONARD HANSEN  
ROBERT LEFEBER  
DAVE MENASCO  
STEWART MULFORD  
HARRY TERHUNE  
CRAIG WALKER



LYNN AUSTIN  
CAROLE AUSTIN  
ROBERT BARBERA  
EDWARD COLE  
DORIS GARSON  
FREDERICK HILL  
W.L."MAC" MACVICAR  
SHIRLEY MCFADDEN  
MARDEN MULL  
GORDON TRIMBLE  
MARILYN WETTERHOLM

TRAIN SUPPLIES  
CUSTOM PAINTS AND PAINTING  
CUSTOM BUILDING  
TRACTION  
CUSTOM DECALS

MAC'S 'O' GAUGE  
Products

BOX 618 (92402)  
7938 TIPPECANOE AVE.  
SAN BERNARDINO, CA

MAIL ORDER  
(714) 889-7509

MAC McFADDEN

HO-HON3

Welcome to Our World of:  
MODEL RAILROADING

**FRANK'S HOBBY SHOP**

Southern California's Most Complete  
Model Railroad Shop  
Open 7 Days a Week

KITS  
SUPPLIES  
TOOLS

666-668 N. Tustin Ave  
Orange, California  
Tel: (714) 639-9901

BRASS

2 GAUGE  
N GAUGE  
O GAUGE



# The Cajon Order Board

Published 6 times a year by the Cajon Division (No.8) of the Pacific Coast Region, National Model Railroad Association the months of Feb., April, June, Aug., Oct., and Dec. Deadline for all material is the 15th of the month preceding publication. Only camera ready copy Ads accepted (white background, black ink lettering). Non-commercial (Club-Pike) Ad rates: 6 issues, \$6.00-1/8 page (2-7/8x3-1/16). The Warehouse Section (Want-or-For Sale). Members only \$1.00 per 3 lines. Extra line 20¢ each. Non-members \$2.00 per 3 lines. Extra line 40¢ each. Each line consists of 42 spaces. Commercial Ad rate inquiries and/or material, send to Editor. Editorial opinions expressed in the "ORDER BOARD" are those of the author and do not necessarily reflect those of the Division, its Officers, PCR or NMRA.

**SUPERINTENDENT**  
32101 Via de Oliva, San Juan Capistrano, Ca. 92675  
**ASST. SUPERINTENDENT**  
13321 Nina Place, Garden Grove, Ca. 92640  
**CHIEF CLERK/PAYMASTER**  
110 S. Date St., Rialto, Ca. 92367  
**DIRECTOR**  
9605 Blanchard Ave., Fontana, Ca. 92335

**CHAIRMAN**

**ACTIVITIES**  
1763 Rutherford, Anaheim, Ca. 92806  
**BALLOT**  
16852 Lynn St., Huntington Beach, Ca. 92649  
**CONTEST**  
Box 618, San Bernardino, Ca. 92402  
**MEMBERSHIP**  
**NOMINATIONS**  
1238-A Beach Blvd., Anaheim, Ca. 92804  
**PUBLIC RELATIONS**  
24225 Jagger St., El Toro, Ca. 92630  
**RAILLETES**  
32101 Via de Oliva, San Juan Capistrano, Ca. 92675  
**REGISTRATION**  
1763 Rutherford, Anaheim, Ca. 92806  
**SECRETARY**  
4080 W. 1st St., Space 202, Santa Ana, Ca. 92703

**ACHIEVEMENT COMMITTEE**

**GARY STENBERG**  
**TED VAN KLAVEREN**

2506 N. Spurgeon St., Santa Ana, Ca. 92706  
13321 Nina Pl., Garden Grove Calif. 92630

**CONVENTION CHAIRMAN**  
Box 618, San Bernardino, Ca. 92402

**FRANK BARONE**

**TED VAN KLAVEREN**

**TOM CUMMINS**

**DUANE LEETZOW**

**TERRY BARRETT**

**JOHN GRASER**

**MAC MCFADDEN**

**FRANK BARONE**

**FRED HILL**

**ANDY BUCO**

**CAROL BARONE**

**LISA BARRETT**

**ANDY ANDERSON**

**SHIRLEY MCFADDEN**



**EDITOR**

**Frank Barone**  
32101 Via de Oliva  
San Juan Capistrano, Ca. 92675

## Membership Application Form

**Pacific Coast Region of National Model Railroad Association, Inc.**

Annual membership dues for the year in the Pacific Coast Region of NMRA are \$2.00. One Dollar (\$1.00) of this amount is for a subscription in the Branch Line, official publication of the PCR. Return this bill form with your remittance.

PLEASE PRINT PLAINLY

Name \_\_\_\_\_ Age \_\_\_\_\_

Address \_\_\_\_\_

City & State \_\_\_\_\_ Zip \_\_\_\_\_

New Member \_\_\_\_\_ or renewal \_\_\_\_\_

NMRA # \_\_\_\_\_ expires \_\_\_\_\_

Main Gauge or Scale (one only) \_\_\_\_\_

Date \_\_\_\_\_ Signature \_\_\_\_\_

Herewith Dues for Year 19 \_\_\_\_\_ in amount of \$ \_\_\_\_\_

Both NMRA and PCR dues may be paid with this form:  
Please Check One: NMRA \$10.00 \_\_\_\_\_ PCR \$2.00 \_\_\_\_\_ Both \$12.00 \_\_\_\_\_

Please send check or money order and blank to:

PCR/NMRA, 7565 19th St., Sacramento, California 95822

INTRODUCED BY \_\_\_\_\_ cajon division

### "THE WAREHOUSE"

100 public timetables: SP, ATSF, UP, WP, & many other roads. 1930's, '40's, & '50's. Send SASE for list, make offer. S.F. Mulford 24291 Juaneno Dr., Mission Viejo, Ca. 92675

RETURN ADDRESS CORRECTIONS have gone up to 25¢. The Division cannot absorb this rate for each return of the ORDER BOARD. For lack of correct address if you move, please forward your new address to the Editor as soon as possible.



**FIRST CLASS**

