

The Cajon Order Board



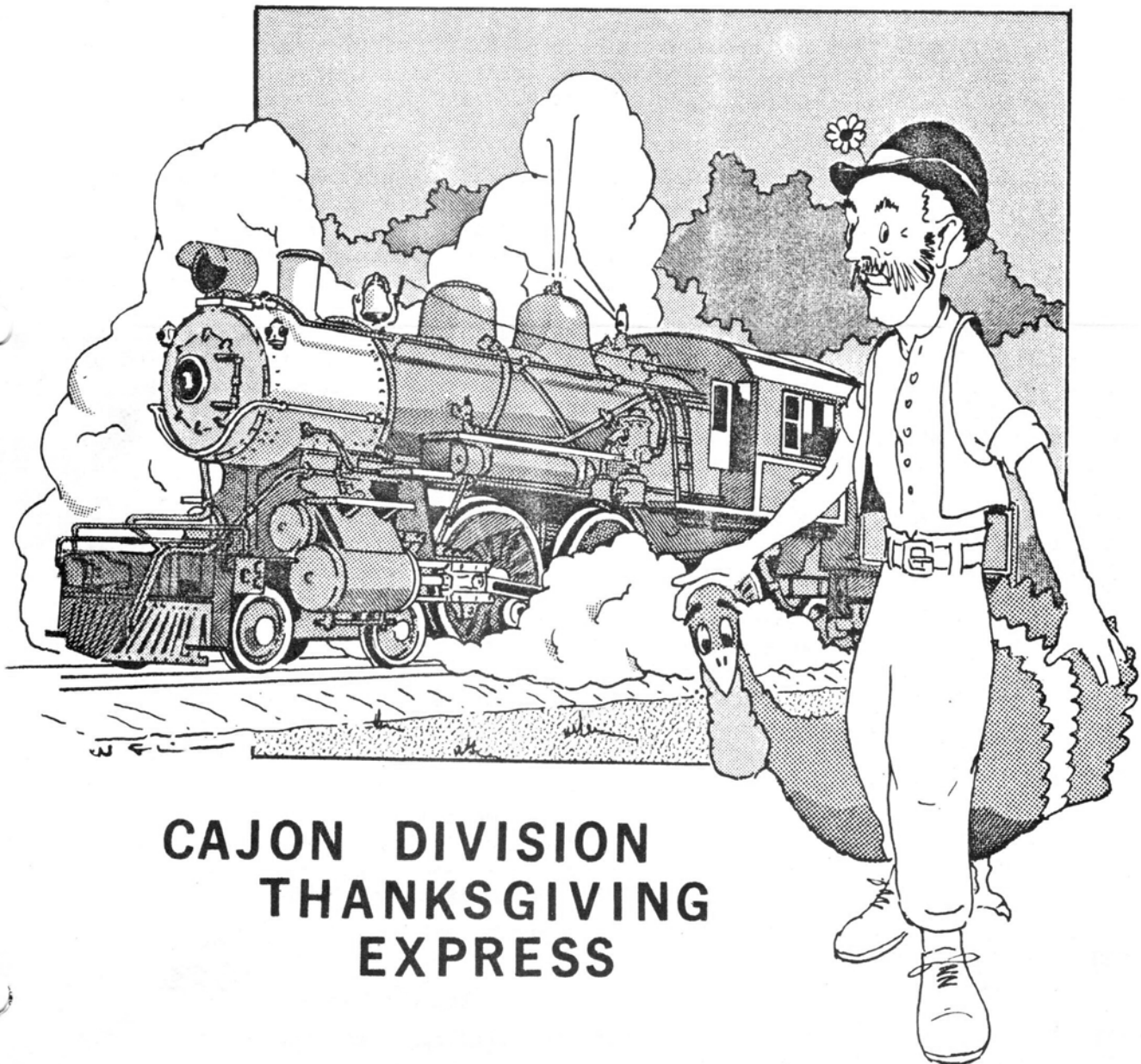
VOL. ⁵₄ NO. 5

CAJON DIVISION

PCR NMRA

OCT 1976

" ALL ABOARD "



(AN OPEN LETTER TO EACH DIVISION MEMBER):

Frank Barone
EDITOR-CAJON ORDER BOARD
32101 Via de Oliva
San Juan Capistrano, Calif. 92675

Frank:

If it is at all possible, I would like the following to be printed in the next Order Board:

WHERE are the volunteers for the Cajon Division? Where are YOU when the Division puts on a Meet and needs extra helping hands? I wish each of you would ask yourself that question. But you know, I think I could guess the answers you would give.....like: "Let George do it", or "There's plenty of help already." Well, let me tell you.....there's NOT!

A good example was at the October Perris Meet. We had over 200 people to enjoy the activities and only 7 volunteers to accommodate the crowd! The volunteers were slightly outnumbered, wouldn't you say? And the worse thing is, that's the way it usually equals out.....only a few volunteers and a large crowd. Where are all those helpers you think we have?

You know this really bothers me because I'm the Convention Chairman for the "Cajon Pass Mini" in 1977 to be held in San Bernardino. We are still in need of volunteers and if we don't get enough, the ones that do get involved will be really working hard. WE CAN'T HAVE TOO MANY VOLUNTEERS. I want my "team" to be able to enjoy putting on this Convention. If we have alot of volunteers, it can be hard-earned FUN. And don't you dare say that you have never worked on a committee so you wouldn't know what to do, because we are all working on this Convention and are new at it too. So why not, the next time you see me, sign up for the rewarding experience of working together with new and old friends on the '77' Mini?

Now, back to the volunteers of the meets.....why not volunteer your help next time? Theres plenty of things to choose from to do. I must admit, that most of it involves work, but theres FUN there too. Believe me, you can make alot of new friends by helping others. Things run smoother when theres enough people helping. So, don't hesitate to walk up to someone who is already working and asking those important words, "Can I help?" Who knows, YOU MAY EVEN ENJOY YOURSELF!.....

Shirley McFadden
Convention Chairman, 1977 Mini
Box 618 - 7938 Tippecanoe
San Bernardino, Ca. 92402

I don't know if this will get you (US) any more volunteers, Frank, BUT IF IT WILL GET ONLY ONE, that will help.....

Shirley Mc

(EDITOR: Well as you can see Shirley hit the nail "right on" the head!
Thanks Shirley.....We soon shall see!)



HOBBY & CRAFT
1001 EAST
10TH AVE.
DENVER, CO 80202
303-733-1413

HOBBY WAREHOUSE

HOBBY
TOOL
CENTER



HOBBY & CRAFT HEADQUARTERS
Factory Authorized Repair Service
SPECIALIZING IN MODEL RAILROADING
- RADIO CONTROLLED AIRPLANES & HELICOPTERS -
OPEN TO THE PUBLIC

531-1413

4128 S. SOUTH LAKESWOOD
1/2 BLOCK WEST OF LAKESWOOD BL.

MILITARY
WEAPONS



MODEL
CARS



MODEL
RAILROADS



MODEL
PLANES



MODEL
SHIPS



MODEL
TRUCKS



HI.....GLAD YOU COULD JOIN US AGAIN. In recent columns we've talked mainly about weathering structures and rolling stock, so why don't we move on to another aspect of scenery.....Trees and bushes. Store-bought trees and green lichen are commonly used to simulate trees and bushes, and they're OK, but with a little work you can have much more effective looking foliage. First, let's talk about trees...leafy-type trees such as Oak trees, etc. (Pine trees were covered very effectively by John Olson in Oct. RMC). The first thing to do is pack the family up in the station wagon and head for the hills...as high up as possible (Silverado Canyon or Cajon Pass will do nicely). Take along a big cardboard box and fill it up with natural twigs, branches and whatever else looks like a tree trunk to you! Up on Cajon Pass, there is a natural growth called "mesquite" it's dead branches make great looking tree trunks. At any rate, after you round up some suitable trunk material, the rest is easy.

First of all, glue some pieces of lichen to the trunk...any color of lichen will do.....try "stretching" the lichen between the various branches of the trunk to achieve a "see-through"...look....Next, spray the lichen with a light brown paint, such as Floquil or Pactra Light Earth REMEMBER: The lichen here represents branches, not leaves, so it should be brown....Take care not to get much brown paint on the trunk. Now, spray the lichen with a spray resin or....urethane (Kepro Spray Resin, or New Finish spray Urethane, available from paint stores). While the spray is still wet, sprinkle on some Architectural Models ground sponge.. I favor the lighter greens, with some brown..gives a good "dry-climate" look. For any type of tree, mix the colors slightly for variation.

For bushes, I do exactly as above but without the tree trunk. First, attach some masking tape to a piece of cardboard or a box, sticky side up. Take small pieces of lichen, in various sizes, and stick them down on the masking tape....now, just paint them brown, spray them with resin and sprinkle on some sponge. When dry, glue them down on your layout. Vary the colors of sponge that you use, and for the best effect, use more than one color on each bush.

When placing your newly-made trees and bushes on your layout, try to follow what you have observed in nature....If you are modeling California, the bulk of leaf-type trees and bushes would be found in valleys and low spots, near water. Up on the hilltops, trees and bushes are much more sparse due to the lack of water.

WELL, ANYWAY...I hope this will help some of you who are struggling with your scenery.....NOW I need to find somebody to help me struggle with mine! I'm modeling about 25 feet of rocky seacoast and I need to come up with an easy way to make realistic waves and surf.....Anybody have any ideas? Enough for now. Hope you can join us next time around.....PAUL.....

PHOTOS BY LARRY KUMFERMAN former Editor of MODEL RAILROADER...One of the LITTLE DEPOT Clinics



MICRO MOTORS and gearheads

All types and sizes available, plus all accessories for re-gearing locos, and custom installation service.

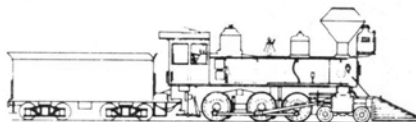
We carry the new "Mason Locomotive Works" walk-around momentum throttle. Ideal for micro motors.

Also Hobbytown, PFM, Westside, NWSL, Sunset, Key Ltd., Lambert, Custom Brass, Kemtron, and numerous craftsman lines.

Send SSAA for details.

THE LITTLE DEPOT

AT HOBBY CITY
1238-A S. Beach Blvd.
Anaheim, CA 92804
(714) 828-5080



PERRIS CONTEST WINNERS

JUDGED TRACTION: "1 entry"
MAC MCFADDEN

DJ LAY:

1st Carl Gaither
2nd Chet Huntley
3rd Elaine Majak
3rd Robert Ewers
3rd Bob Sheinberg

BAKE CONTEST (had a
problem with categories)

FAVORITE MODEL:

1st Chet Huntley
2nd Carl Gaither
3rd Mac McFadden

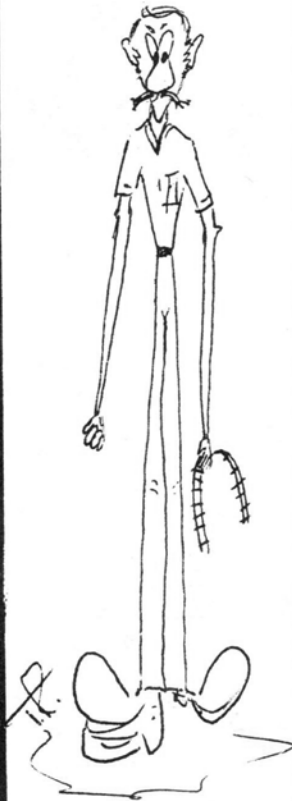
CRAFT CONTEST:

1st Robert Ewers
2nd Elaine Majak
3rd Elaine Majak

LIL'S STEAMERS:

NO SHOW ! Sorry.....

RAILLETES: Should you
have any ideas concerning
Contests we can offer,
please contact Carol
Barone.



LONNIE, I'VE
GOT YOUR SNAP TRACK!

HARPER'S HOBBY SHOP

Steams

Into

SAN BERNARDINO,
CA.

222 G STREET

Next to Central City Mall

Still in RIVERSIDE, CA.

6568 MAGNOLIA AVE.

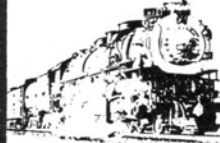
We Specialize In Railroads



TIME TABLE "76"

OCT. 23 ROUNDHOUSE GANG ANNUAL
OPEN HOUSE. Cope Jr. High
Redlands, Ca. (See Shop Talk)

OCT. 24 FRANK'S HOBBY SHOP ANNUAL
PICNIC, Riverside Live Steamers
11AM til'dark. Refreshments
furnished. Bring your own pic-
nic lunch. RC Plane Flying,
Rocket Firing, Ball Game.....

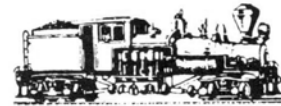


OCT.29-30-31 PCR MINI CONVENTION, Santa
Barbara. Details Ross Graham,
103 Dearborn Pl., #17, Goleta;
Calif. 93017.

NOV.5-6-7 WEST COVINA BROTHERHOOD OF
MODEL RR, INC., 103 W. Bonita
Ave., San Dimas, Ca. (See Shop
Talk).

NOV.9,13,14,16 PASADENA MODEL RR OPEN
HOUSE., 139 A Main St.,
Alhambra, Ca.

NOV.13-14-15 GLENDALE MODEL RR CLUB OPEN
House, 619 Hahn Ave., Glendale.



NOV.12-13 VALLEY MODEL RR ENGINEERS
OPEN HOUSE, 1112 N Hacienda
La Puente, Ca., (Call 213-
333-5502 for details.).

NOV.17-20-21 BEACH CITIES MODEL RR CLUB
OPEN HOUSE 2226 E. 4th St.,
Long Beach, Cal.

NOV. 20-21 BELMONT SHORE MODEL RR CLUB
N Meet, 2306 Orange Ave.,
Signal Hill, Ca.

REMEMBER....NOVEMBER is MODEL RR MONTH.....



LARGE SELECTION
"BRASS"

HO HON3 N O

END OF TRACK

MODEL TRANSPORT SUPPLY
COME BY AND SAY "HELLO"
RAILROAD SPECIALIST AND REPAIR

JACK J. AMBROSE
(714) 529-4474

630 S. BREX BLVD.
BREX, CA 92621

SHOP TALK

If you are not partaking of the FREE CLINICS and Movies that the Hobby Shops are putting on for you for one reason or another, try to attend. It is more beneficial to you than... the "BOOB TUBE". Not too much going on this time of year with Thanksgiving and Christmas just around the corner. THE ROUNDHOUSE GANG has put it all together this year for their forthcoming Oct. 23rd Open House. Should be a fun day. 9AM-4PM at Cope Jr. High School, at 1100 W. Cypress Ave., Redlands. Take 10 out to Redlands, right on Cypress....THE WEST COVINA BROTHERHOOD OF MRR ANNUAL OPEN HOUSE, Nov. 5, 7:30 P.M.-11PM; Nov. 6, 1PM-5PM & 7PM-10PM; Nov. 7th, 1PM-5PM.; Scheduled HO-HOn3, unscheduled HO Traction, scheduled "N" Gauge operation, & Static Display. Refreshments, No Admission... For more info. Andy Waterman, 2110 E. Thachery St., West Covina 91791. Club Address: 104 West Bonita Ave., San Dimas. The best directions I have to get there is off the Pomona Fwy or San Bernardino Fwy.....Rumor has it....that...if all things considering Orange Cty. may have... its own LIVE STEAMERS PARK....that is if the Corps. of Engineers can be persuaded.. DO NOT KNOW all the facts at this time...BUT HAVE MY EARS OUT!.....ALSO, does anyone know about a move to do something out at the Orange County Fairgrounds pertaining to "Prototype Operations!".....ORANGE COUNTY FAIRGROUNDS O-Gaugers, I understand are moving to a larger and more modern facility on the grounds after the '77 Fair.....Any O-Gauge Modelers out there?? THE HOn3 MODULE CLUB is still trying to get off the ground. In need of members.....Other groups have contacted me and Paul Scoles, to inquire on how we are coming along, and for specifications. There are 4 such groups back in the Mid-West and East that are coming along. We should be able to do the same. So.. come on and get down to THE LITTLE DEPOT all you HOn3'rs and sign up. We have alot of expertise out there that could be put to good use! Speaking of THE LITTLE DEPOT.....they have discontinued the Fri. Nite Clinics....but will start up again after the Holidays.....MINI TRAINS is still running their Mon. Night, Clinics. Check their schedule on pg. 3.....HARPERS in RIVERSIDE will be forwarding something very soon on their up-coming program... Two other shops are planning something along the clinics and movies line. SO WATCH..... The response has not been too great about the Div. Directory. Only a small portion has responded. We cannot afford to spend the great amount of money it takes to print up a Directory and have to "sit on it" or "use it for.. T.P."....SAME for the By-Laws. It cost the Division \$25 to print them up and only "two" modelers asked for them....NEXT TIME....FRANK

66

* * BRASS * * * * * WESTSIDE & PFM *
* BUY & SELL LIONEL *
N-HO-O

TRAINS



Bob Longstreet
(714) 893-4911

**DICK'S
HOBBY
SHOP**

13079 Springdale Street
Westminster, CA 92683

CLOSED WEDNESDAYS

HAVE YOU VOLUNTEERED LATELY?...AND...FOLLOWED THROUGH WITH YOUR HELP? PLEASE BELIEVE US "WE NEED YOUR HELP..." WE MAY SOUND LIKE WE ARE BEGGING & WE ARE!.....SO HELP IF YOU CANOUR BANQUET AND 1st MODEL RAILROAD SHOW IS COMING UP IN FEB. WE WILL BE LOOKING AT OVER 5,000 PEOPLE COMING THROUGH, & BELIEVE ME WE ARE IN NEED OF HELP IN EVERY AREA..... ESPECIALLY PUBLIC RELATIONS, ACTIVITIES AND THE OTHER SECTIONS. WE NEED YOU NOW!

NO RAMBLINGS THIS ISSUE. NOT ENOUGH SPACE.. NEXT ISSUE! WE WISH TO THANK THOSE OF YOU THAT ARE SENDING IN MATERIAL FOR OUR O.B.... KEEP THE INFO COMING. IT WILL BE PRINTED..

WE HAD TO CANCEL 3 ACTIVITIES AT THE PERRIS MEET! AS THOSE WHO VOLUNTERED WERE "NO SHOW"

Specializing in Brass Imports • Custom Painting
Scratch Builders Supplies



THE BACK SHOP

Exclusively Model Railroadino

DENNIS WEAVER

14341 Beach Blvd., Suite F
Westminster, California 92683
(714) 893-2552

HO*****HOn3*****O*****On3

LARGE SELECTION BRASS IMPORTS AND
SCRATCH BUILDERS SUPPLIES

CUSTOM PAINTING & REPAIRS

HOURS

WEEKDAYS 5-8PM***SAT.10-6PM***SUN.12-4PM
CLOSED WEDNESDAY

AS OF ??? CAJON DIV. NEW MEMBERS

"Wayne Tucker"

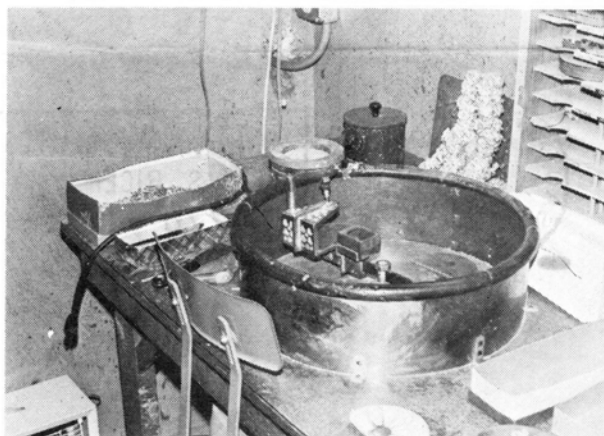
Have received a list from PCR Membership Ch. with 20 names, but donot know if PCR or NMRA or both! Nine modelers have approached me that they are new members of the Division... Without the PCR Secy's Div.Mbrship Up-Date , I AM LOST..To my estimation we have "29" new members!

THE NOMINATIONS for your Div.officers for the up-coming elections, have been extended. If you would like to run,please submit your name by Nov. 15th to the Nominations Ch. (see back of O.B.).

One of FRANK's HOBBY SHOP Fri.,Nite gatherings and outing to Leo Campbell's Model Company.



CENTRIFUGAL CASTING MACHINE



CAMPBELL's FAMOUS SHADOW BOXES



NOTICE: DID YOU READ CAREFULLY PAGE 2.....
If not..do!If so, do it again then RESPOND..

HO-HON3

Welcome to Our World of:
MODEL RAILROADING



FRANK'S HOBBY SHOP

Southern California's Most Complete
Model Railroad Shop
Open 7 Days a Week

666-668 N. Tustin Ave
Orange, California

Tel: (714) 639-9901

BRASS

IMPORTS

Z GAUGE

KITS

SUPPLIES

TOOLS

O GAUGE

N GAUGE

P
H
O
T
O
S
"
B
I
G
S
A
M
"
L
A
B
R
E
C
Q
U
E

The Cajon Order Board

Published 6 times a year by the Cajon Division (No.8) of the Pacific Coast Region, National Model Railroad Association the months of Feb., April, June, Aug., Oct., and Dec. Deadline for all material is the 15th of the month proceeding publication. Only camera ready copy Ads accepted (white background, black ink lettering). Non-commercial (Club-Pike) Ad rates: 6 issues, \$6.00-1/8 page (2-7/8x3-1/16). The Warehouse Section (Want-or-For Sale). Members only \$1.00 per 3 lines. Extra line 20¢ each. Non-members \$2.00 per 3 lines. Extra line 40¢ each. Each line consists of 42 spaces. Commercial Ad rate inquiries and/or material, send to Editor. Editorial opinions expressed in the "ORDER BOARD" are those of the author and do not necessarily reflect those of the Division, its Officers, PCR or NMRA.

SUPERINTENDENT
32101 Via de Oliva, San Juan Capistrano, Ca. 92675
ASST. SUPERINTENDENT
13321 Nina Place, Garden Grove, Ca. 92640
CHIEF CLERK/PAYMASTER
110 S. Date St., Rialto, Ca. 92367
DIRECTOR
9605 Blanchard Ave., Fontana, Ca. 92335

CHAIRMAN

ACTIVITIES
1763 Rutherford, Anaheim, Ca. 92806
BALLOT
16852 Lynn St., Huntington Beach, Ca. 92649
CONTEST
Box 618, San Bernardino, Ca. 92402
MEMBERSHIP
NOMINATIONS
1238-A Beach Blvd., Anaheim, Ca. 92804
PUBLIC RELATIONS
24225 Jagger St., El Toro, Ca. 92630
RAILLETES
32101 Via de Oliva, San Juan Capistrano, Ca. 92675
REGISTRATION
1763 Rutherford, Anaheim, Ca. 92806
SECRETARY
4080 W. 1st St., Space 202, Santa Ana, Ca. 92703

ACHIEVEMENT COMMITTEE

GARY STENBERG
TED VAN KLAVEREN
CONVENTION CHAIRMAN
Box 618, San Bernardino, Ca. 92402

2506 N. Spurgeon St., Santa Ana, Ca. 92706
13321 Nina Pl., Garden Grove Calif. 92630

FRANK BARONE
TED VAN KLAVEREN
TOM CUMMINS
DUANE LEETZOW
TERRY BARRETT
JOHN GRASER
MAC MCFADDEN
FRANK BARONE
FRED HILL
ANDY BUCO
CAROL BARONE
LISA BARRETT
ANDY ANDERSON

SHIRLEY MCFADDEN



EDITOR

Frank Barone
32101 Via de Oliva
San Juan Capistrano, Ca. 92675

Membership Application Form

Pacific Coast Region of National Model Railroad Association, Inc.

Annual membership dues for the year in the Pacific Coast Region of NMRA are \$2.00. One Dollar (\$1.00) of this amount is for a subscription in the Branch Line, official publication of the PCR. Return this bill form with your remittance.

PLEASE PRINT PLAINLY

Name _____ Age _____

Address _____

City & State _____ Zip _____

New Member _____ or renewal _____

NMRA # _____ expires _____

Main Gauge or Scale (one only) _____

Date _____ Signature _____

Herewith Dues for Year 19 _____ in amount of \$ _____

Both NMRA and PCR dues may be paid with this form:
Please Check One: NMRA \$10.00 _____ PCR \$2.00 _____ Both \$12.00 _____

Please send check or money order and blank to:

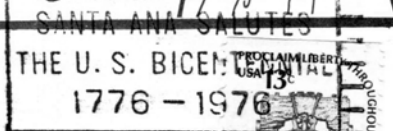
PCR/NMRA, 7565 19th St., Sacramento, California 95822

INTRODUCED BY: cajon division

HAVE YOU
ACQUIRED A
NEW MEMBER
TODAY?

DON'T TAKE
"NO" FOR AN
ANSWER.....

TRY....TRY...
AGAIN.....



FIRST CLASS

